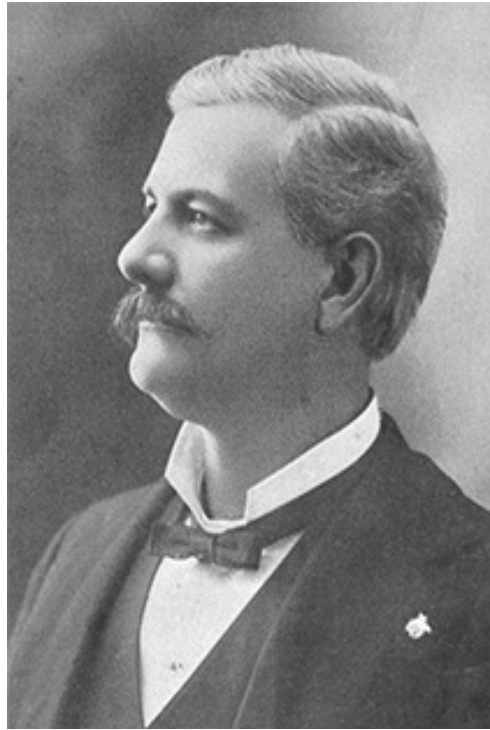


MPA 2015 Hall of Fame Inductee:



Col. Robert Morgan White



— Col. Robert Morgan White —

Col. Robert Morgan White was born in 1855. Col. White published his first addition of the Mexico Weekly Ledger Sept. 22, 1876. Col. White made the Ledger one of the state's leading newspapers, and he became one of Missouri's and the nation's respected journalism leaders. Col. White earned his degree from Westminster College and was offered a contract to play baseball with the St. Louis Browns. He edited a college monthly, where he "acquired a taste for journalism."

Col. White's son, L. Mitchell White, described his father in these words: "He was six feet, three inches tall, and weighed close to 200 pounds when he took charge of the Ledger. He was straight as an arrow and walked with long strides. People always referred to his walking across the square rapidly, his coattails flapping in the air. He was energetic, extremely active, quick, both in actions and reaching a decision. Always just and fair, he deplored dishonesty and misbehavior. He had little time or use for political demagogues or those in public life who used their positions for selfish purposes or to rob from the public."

Col. White served as president of the Missouri Press Association in 1885. His son, L. Mitchell White (1921), and his grandson, Robert M. White II (1984), served as MPA presidents and also are members of the MPA Hall of Fame. Col. White was active as a member of the Missouri Press Association all his life and was at one time recording secretary of the National Editorial Association (now the National Newspaper Association) and vice president of the Western Federation of Writers. He was a leader in church, civic and charitable organizations in the Mexico community. A newspaper editor in Warrensburg in 1885 noted: "Bob White's paper, the Ledger, has done more for the town of Mexico than have all of its citizens combined. The Ledger is to Mexico what the heart is to man." Col. White died in 1934 at the age of 79.